



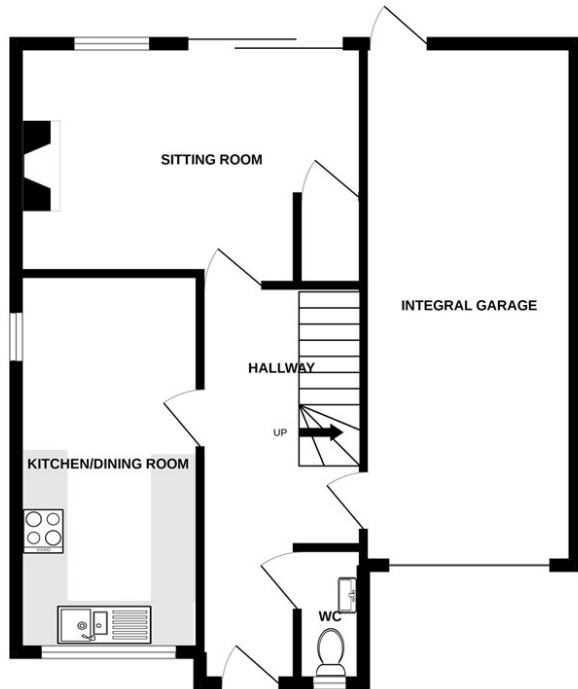
4 Bed  
House - Detached  
located in

£295,000

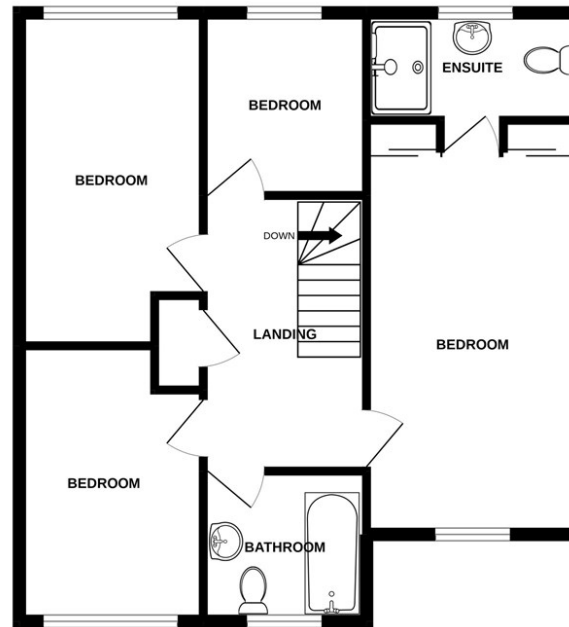


 **Millerson**  
millerson.com

GROUND FLOOR  
627 sq.ft. (58.3 sq.m.) approx.



1ST FLOOR  
624 sq.ft. (58.0 sq.m.) approx.



TOTAL FLOOR AREA : 1251 sq.ft. (116.3 sq.m.) approx.

Whilst every attempt has been made to ensure the accuracy of the floorplan contained here, measurements of doors, windows, rooms and any other items are approximate and no responsibility is taken for any error, omission or mis-statement. This plan is for illustrative purposes only and should be used as such by any prospective purchaser. The services, systems and appliances shown have not been tested and no guarantee as to their operability or efficiency can be given.  
Made with Metropix ©2022

## DIRECTIONS

## CONTACT

6a High Street  
Launceston  
Cornwall  
PL15 8ER

E: [launceston@millerson.com](mailto:launceston@millerson.com)  
T: 01566 776055  
[www.millerson.com](http://www.millerson.com)

Energy Efficiency Rating		
	Current	Potential
Very energy efficient - lower running costs		
(92 plus) <b>A</b>		
(81-91) <b>B</b>		
(69-80) <b>C</b>		
(55-68) <b>D</b>		
(39-54) <b>E</b>		
(21-38) <b>F</b>		
(1-20) <b>G</b>		
Not energy efficient - higher running costs		
<b>England &amp; Wales</b>	EU Directive 2002/91/EC	